

Machines Covered

This Covers the AM15 line of dishwashers.

The below information was taken from and can be found within the instruction manual of any Hobart product, located at: <https://www.hobartcorp.com/resources-hobart>.



⚠WARNING Disconnect the electrical power to the machine and follow lockout / tagout procedures. There may be multiple circuits. Be sure all circuits are disconnected.

⚠WARNING When performing service work, corrosive chemicals may be present. Exposure to these chemicals could result in injury. It is very important to follow the manufacturer's instructions as found in the (Material) Safety Data Sheet/(M) SDS. Information regarding the Personal Protective Equipment (PPE) requirements can be found in the (M) SDS that accompanies product or can be found online.

Fill/Rinse System

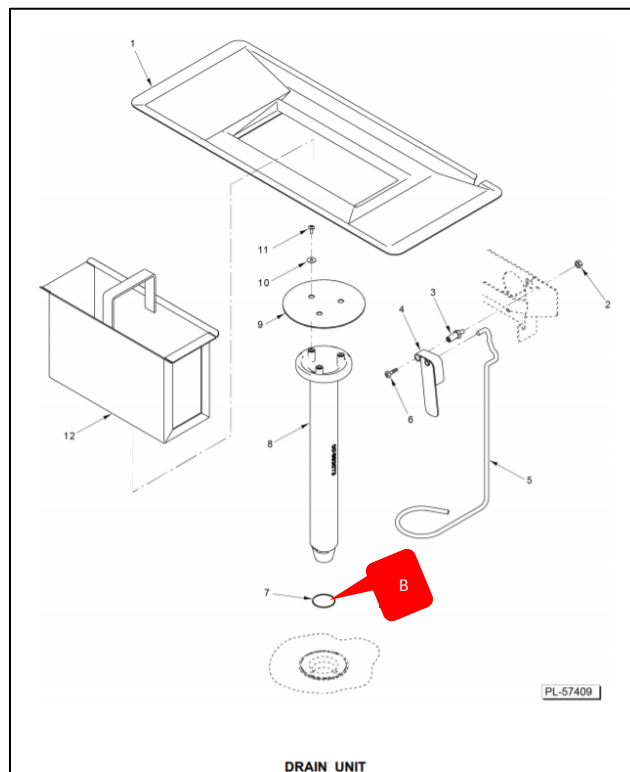
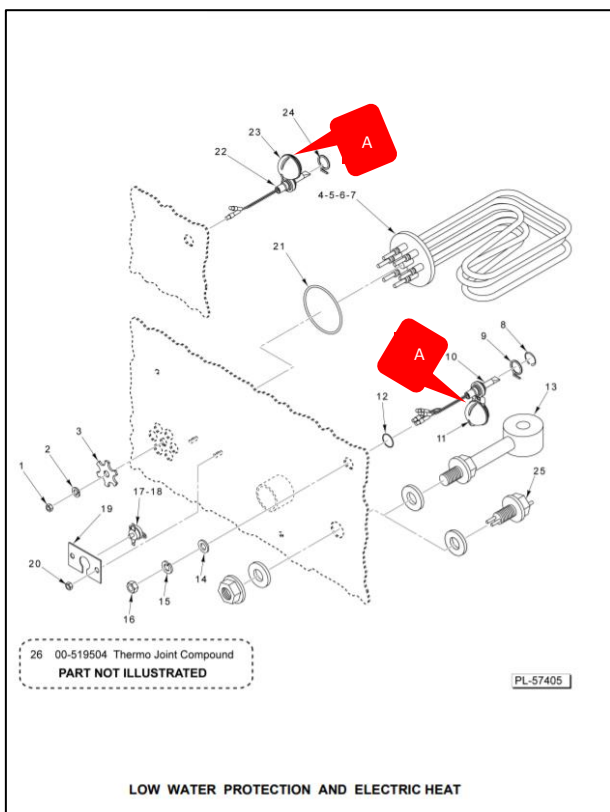
✓ = PROCESS COMPLETED

Task	Part	Qty	Comments	
A: Replace Vacuum Breaker Kit.	00-292910	1	---	<input type="checkbox"/>

Drain System

✓ = PROCESS COMPLETED

Task	Part	Qty	Comments	<input type="checkbox"/>
A: Replace fill Floats.	00-122674	1	AM15, 1 Extra	<input type="checkbox"/>
		2	AM15SVLT & AM15SCB Only	<input type="checkbox"/>
B: Replace Standpipe O-Ring.	00-067500-00120	5	4 Extra	<input type="checkbox"/>



Wash Tank/Rinse Tank System

✓ = PROCESS COMPLETED

Task	Part	Qty	Comments	<input type="checkbox"/>
A: Replace upper and lower wash arm O-Rings.	00067500-00147	2	---	<input type="checkbox"/>
B: Replace upper and lower wash arm Manifold O-Rings.	00-067500-00110	3	1 Extra	<input type="checkbox"/>
C: Replace Bushing.	00-893044	1	---	<input type="checkbox"/>
D: Replace lower wash arm O-Ring.	00-067500-00153	1	---	<input type="checkbox"/>
E: Replace upper wash arm Retaining Ring.	RR-011-98	5	3 Extra	<input type="checkbox"/>

