



Project _____
 AIA # _____ SIS # _____
 Item # _____ Quantity _____ C.S.I. Section 114000



ACCESS – CLAS

Semi-Auto Wrapping System



CLAS semi-automatic system pictured with W32 wrap station, SP-5 sealer belt, CLAS-1LR, and Access scale, console and printer

Reference F40256 for CLAS components and accessories



SPECIFIER STATEMENT

The Hobart CLAS semi-automatic wrapping system weighs your product and provides label application after a package has been hand wrapped. Hobart offers a variety of accessories to go with the CLAS to customize the best solution for your meat room. Left to Right or Right to Left orientation must be determined for purchase.

CLAS SYSTEM DEVICES

- CLAS-1LR** or **CLAS-1RL** – Includes Compact Label Applier w/sensors, integrated heavy-duty frame and scale/conveyor. Must be directionally ordered right to left, or left to right.
- EPP-3** Access Prepack Printer
- EPCP-5s** Linux operating system, HT series functionality
- W32-6** Wrap station
- SP-5** Sealer belt conveyor

STANDARD FEATURES

- + Simple, reliable operation
- + Access/CLAS system averages 14 packages per minute
- + Conveyor scale, weighs up to 30 lb. x .01 increments
- + Left to right or right to left configurations
- + 4-position swivel wand lets you rotate labels in all four directions
- + Rugged stainless steel construction
- + Easy to clean sanitary design

ACCESSORIES (Available at extra cost)

- 55A-SHELFA – Optional side shelf for W32 wrap station
- RBG-2 – Rotary bin conveyor

ACCESS – CLAS SEMI-AUTO WRAPPING SYSTEM

Approved by _____ Date _____ Approved by _____ Date _____

SPECIFICATIONS

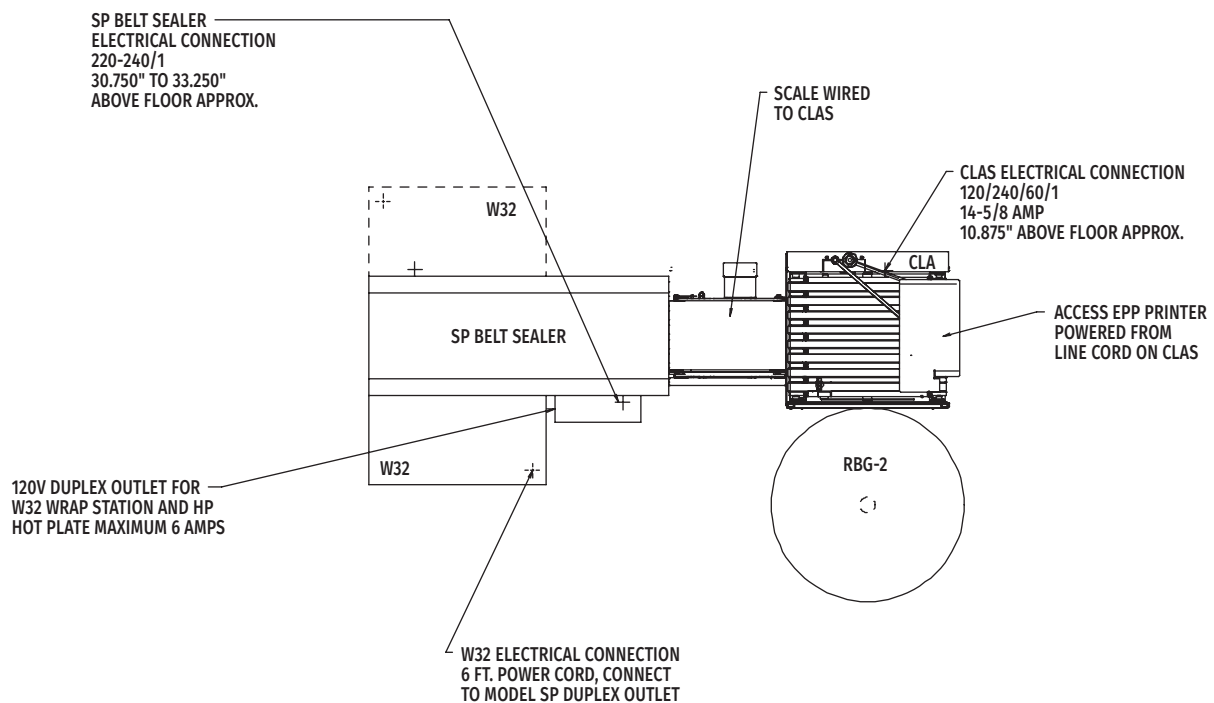
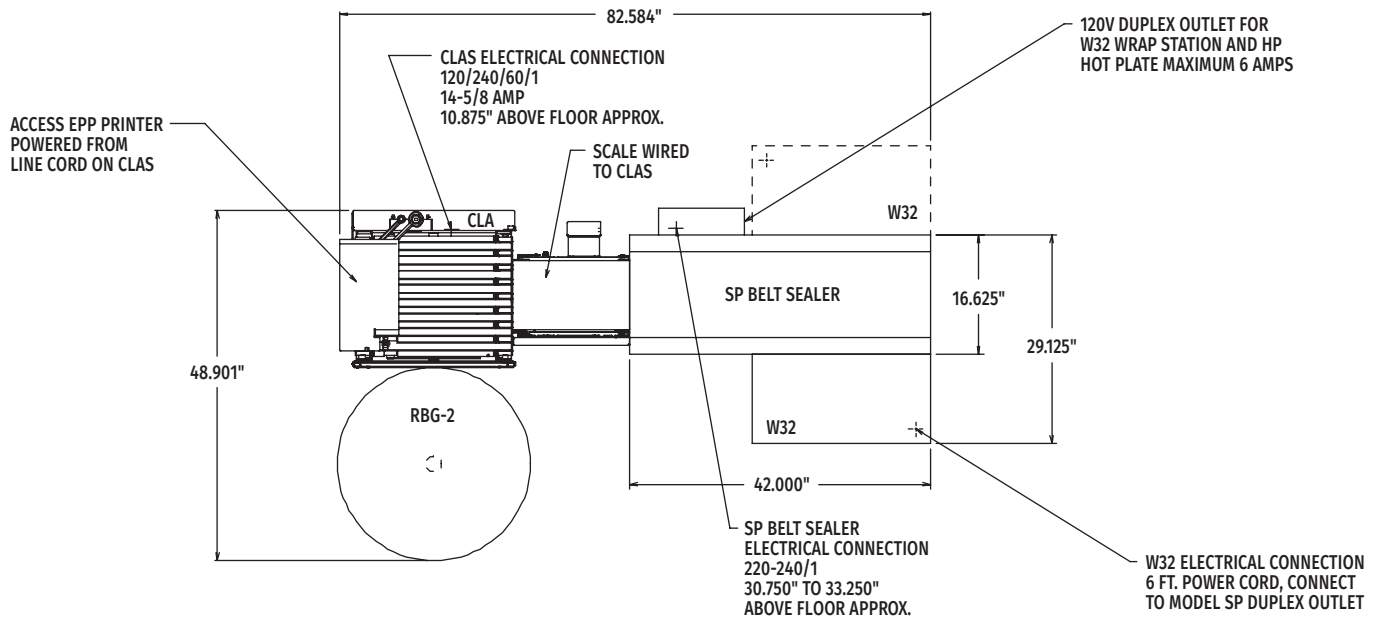
Construction: Heavy gauge stainless steel frame, legs and panels

Dimensions: *System* – 8'11" x 2'6"; *CLAS-1* – 22" long x 24³/₈" wide x 65¹/₄" high

Electrical: 120/240 (3 wire)/60/1 14.5/8.0 amps

Shipping Weight: *CLAS-1* – 264 lbs.

DETAILS AND DIMENSIONS



Access - CLAS System

As continued product improvement is a policy of Hobart, specifications are subject to change without notice.