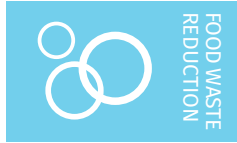




Project _____
AIA # _____ SIS # _____
Item # _____ Quantity _____ C.S.I. Section 114000



FD4/50, FD4/75, FD4/125 FOODWASTE DISPOSERS



Short Housing
Model



Long Housing
Model

Complies with
ASSE 1009



SPECIFIER STATEMENT

Hobart Disposers are well recognized for quality and capacity. They're designed with your needs in mind – built with a large capacity for food wastes.

The following pages illustrate the variations of controls and accessories available to make these food waste disposers the most versatile equipment for small to medium sized clean-up systems.

SPECIFICATIONS

Motors: Continuous duty rating, equipped with manual reset thermal overload inherent protector. Permanently lubricated ball bearings for upper and lower shelf support. Upper bearing is sealed on both sides.

Housings: Heavy aluminum grind and discharge housings. Four bolts fasten the motor unit to the grind chamber, permit easy removal.

Mounting: All Hobart disposers (except when using accessory group E), fasten to 7" I.D. (throat opening) cones. A vinyl isolating ring eliminates metal-to-metal contact at the cone mounting, reduces vibration and noise transmission.

Stationary Shredder Ring: 1¾" high, 4 machine ground primary action breaker bars, 42 secondary action grinding teeth.

Flywheel: Breaker blade, mounted at center, speeds grinding, prevents objects from "riding" at center. Two hardened stainless steel cutter blocks (fastened to flywheel with nylock screws) are replaceable, can be indexed for new cutting edges. Ni-Resist flywheel is 6¾" diameter, slots undercut the shredder ring to assure that particles are cut to proper size before passing to the drain line.

Motor Shaft Seal: Seal is a high quality, cartridge style mechanical face seal. The rotating mating ring matches to a wear resistant seal surface.

Drain Connector: A chrome plated brass tailpiece is provided for connection to a 1½" standard drain trap.

Dual Directional Grinding: All disposers operate in either direction of flywheel rotation. Direction of rotation can be controlled by the operator (to increase life and efficiency of grinding elements – back flywheel free of a "jam") when installed with Control Groups 5 & 6.

Weight: Shipping – approximately 60 lbs. (does not include accessory group or controls).

FD4/50, FD4/75, FD4/125 FOODWASTE DISPOSERS

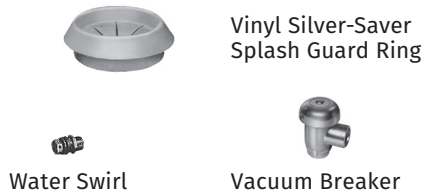
Approved by _____ Date _____ Approved by _____ Date _____

ACCESSORY GROUPS

GROUP A (For use with long upper housing only.)



GROUP B (For use with long upper housing only.)



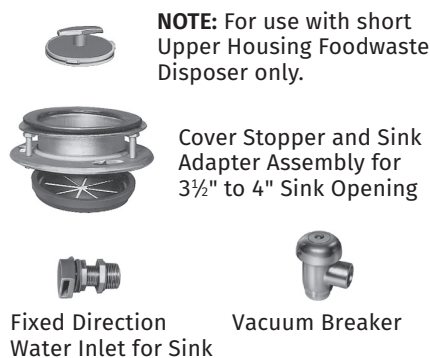
GROUP C (For use with long upper housing only.)



GROUP D (For use with long upper housing only.)

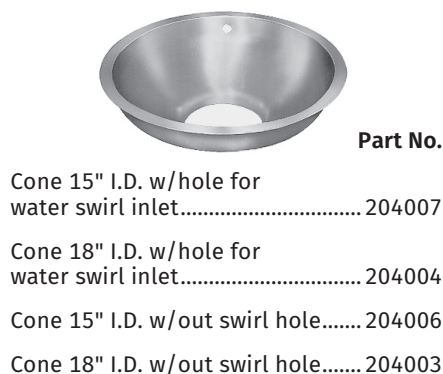


GROUP E (For use with short upper housing only.)

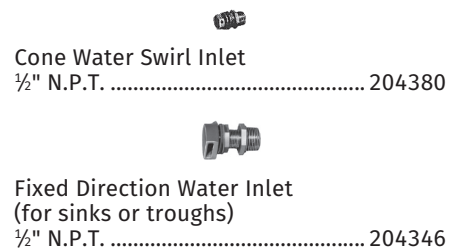


ACCESSORY COMPONENTS

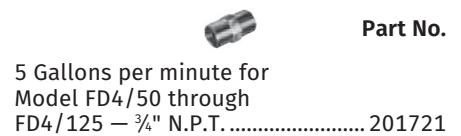
CONES-SINK – Stainless Steel



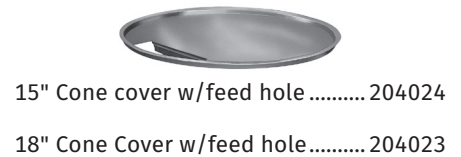
WATER INLETS



FLOW CONTROL



CONE COVER – STAINLESS STEEL



CONE FEEDING ACCESSORIES



SILVER-SAVER SPLASH GUARD RING



VACUUM BREAKERS – Chrome Plated



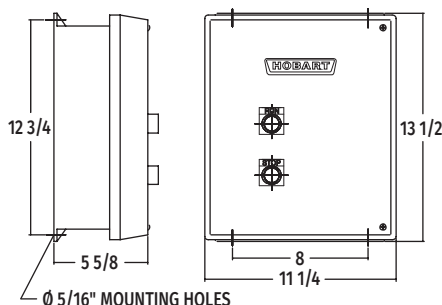
Adapters are available to install Hobart Disposers on existing cones. See Form F7543.



FD4/50, FD4/75, FD4/125 FOODWASTE DISPOSERS

ELECTRICAL CONTROL GROUPS

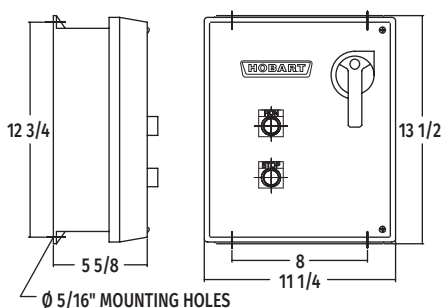
Listed by Underwriters Laboratories Inc., for use with FD4 Disposers
(50 Hz. Electrical Specifications not submitted for UL Listing.)



Group 5 - For all Models

Includes:
Magnetic Contactors
Pushbutton Start and Stop
Automatic Reversing
Made from a NEMA 4 Enclosure
Solenoid Valve (24 V only)

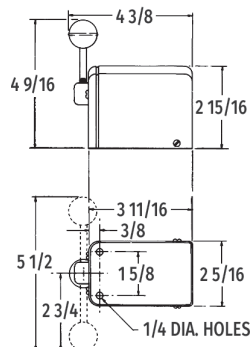
Approximate
Shipping Wt. 19 lbs.



Group 6 - For all Models

Includes:
Magnetic Contactors
Pushbutton Start and Stop
Automatic Reversing
Time Delay for water after shut-off
Line Disconnect
Solenoid Valve (24 V only)
Made from a NEMA 4 Enclosure

Approximate
Shipping Wt. 20 lbs.



Group 4 - For Models thru FD4/200

Includes:
Manual Reversing Switch
NEMA 1 Enclosure Standard
NEMA 4 Enclosure Optional
Not available above 250 volts
Optional Solenoid Valve

Approximate
Shipping Wt. 11 lbs.

Model	H.P.	Ph.	Hz.	Volts	Rated Amps
FD4/50	1/2	1	60	120/208-240	4.6 / 2.3
		3	60	208-240/480	2.5-2.4 / 1.2
FD4/75	3/4	1	60	120/208-240	6.3 / 3.15
		3	60	208-240/480	2.6-2.4 / 1.2
FD4/125	1 1/4	1	60	120/208-240	11.1 / 5.05
		3	60	208-240/480	4.0 / 2.0
FD4/50	1/2	1	50	110-120/220-240	6.8 / 3.4
		3	50	220-240/380-415	2.6 / 1.3
FD4/75	3/4	1	50	110-120/220-240	8.2 / 4.1
		3	50	220-240/380-415	2.6 / 1.3
FD4/125	1 1/4	1	50	110-120/220-240	12.8 / 6.4
		3	50	220-240/380-415	4.6 / 2.3

The dash (-) between voltages represents the range (low-high) of voltage operation.
The slant (/) line indicates the dual voltage operation accomplished by motor lead connection: follow connecting diagram on motor.

SAMPLE SPECIFICATION

FD4/75 — B — 4 (230/60/3)

Electrical Specifications

Electrical Control Group

Accessory Group

Model Number

Cut hole 19" for 18" cone. Hole to be 16" for 15" cone.

Solenoid must be installed in upright position.

Disposer may be easily rotated for better drain line connection.

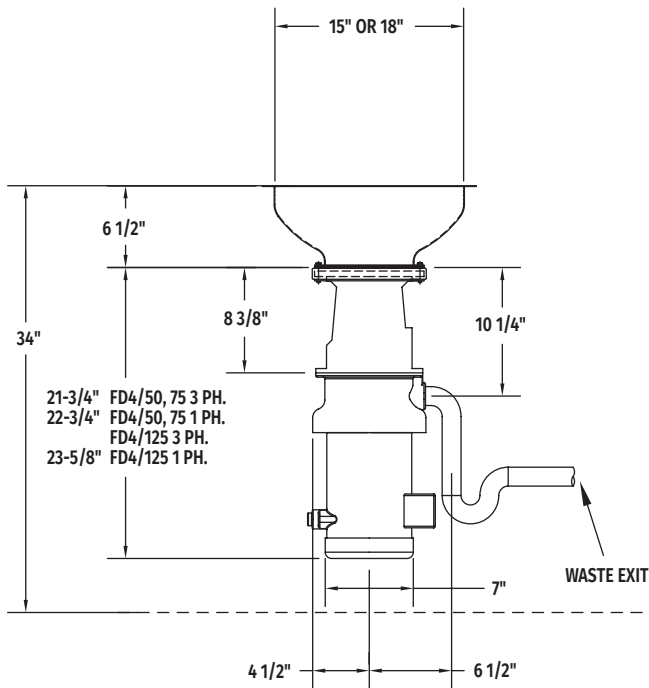
Center line at wall outlet of trap should not be higher than center line of disposer discharge opening.

If water pressure is in excess of 60 P.S.I. install a pressure reducing valve.

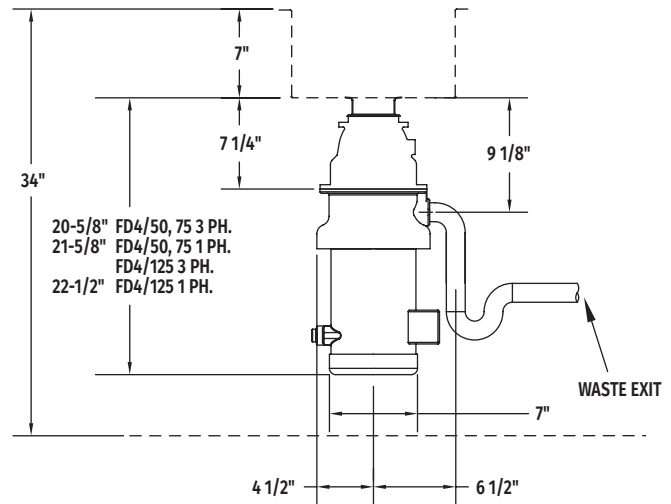


FD4/50, FD4/75, FD4/125 FOODWASTE DISPOSERS

DETAILS AND DIMENSIONS

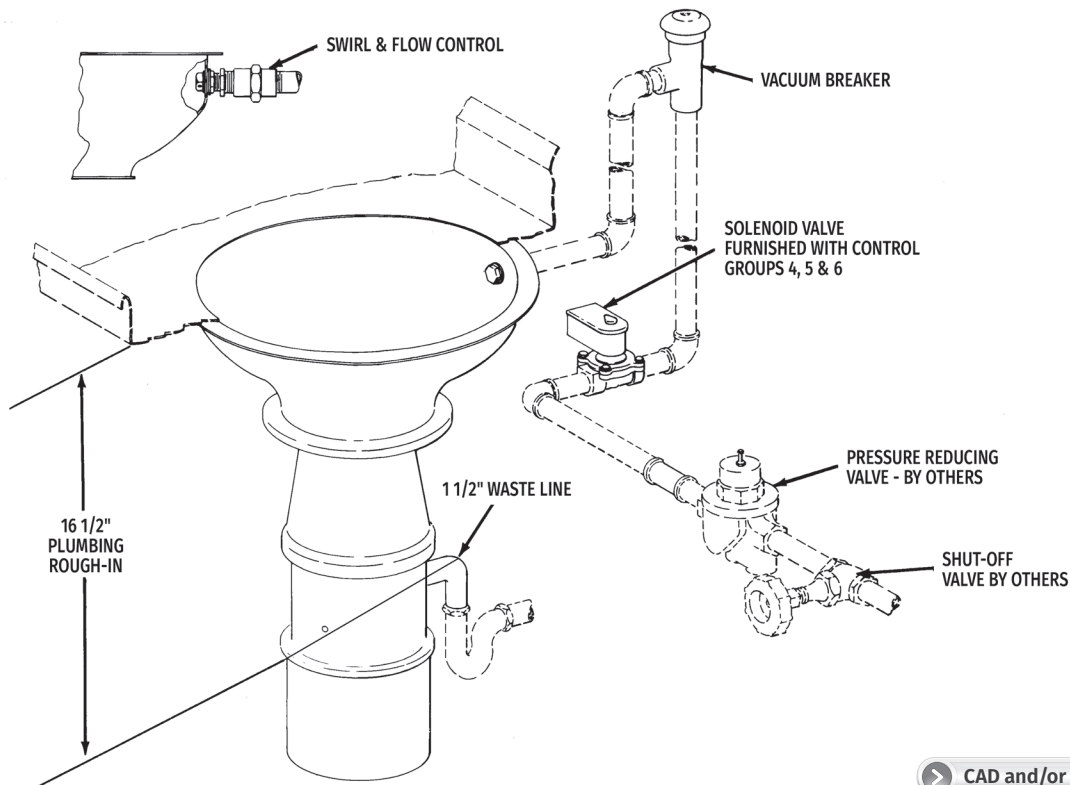


Long Upper Housing



Short Upper Housing

TYPICAL INSTALLATION – Unit with Long Upper Housing



CAD and/or Revit Files Available

As continued product improvement is a policy of Hobart, specifications are subject to change without notice.