

Machines Covered

This Covers the FT1000 line of dishwashers including: FT1000/I/E STD Base Models and FT1000/I/E STD Additional Wash Sections.

The below information was taken from and can be found within the instruction manual of any Hobart product, located at: <https://www.hobartcorp.com/resources-hobart>.



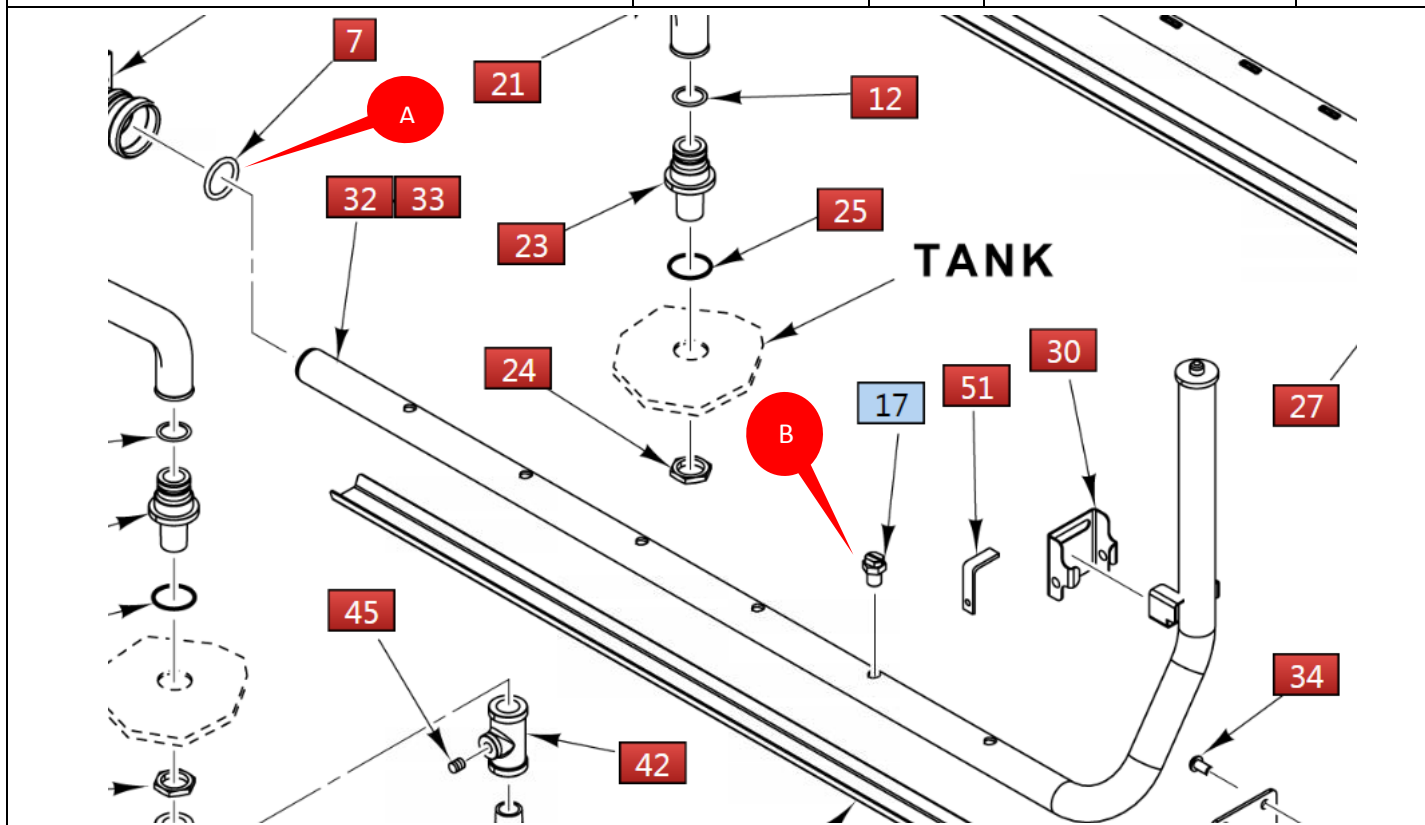
⚠️WARNING Disconnect the electrical power to the machine and follow lockout / tagout procedures. There may be multiple circuits. Be sure all circuits are disconnected.

⚠️WARNING When performing service work, corrosive chemicals may be present. Exposure to these chemicals could result in injury. It is very important to follow the manufacturer's instructions as found in the (Material) Safety Data Sheet/(M) SDS. Information regarding the Personal Protective Equipment (PPE) requirements can be found in the (M) SDS that accompanies product or can be found online.

Wash Tank/Rinse Tank System

✓ = PROCESS COMPLETED

Task	Part	Qty	Comments	<input type="checkbox"/>
A: Replace O-Ring.	00-067500-00131	5	---	<input type="checkbox"/>
B: Replace Nozzle Assy.	00-869278-00022	16	N/A: On Add. Wash Sec.	<input type="checkbox"/>



Conveyor Take Up

✓ = **PROCESS COMPLETED**

Task	Part	Qty	Comments	<input type="checkbox"/>
A: Replace Grommet, Rubber Bumper	00-974099	2	N/A: On Add. Wash Sec.	<input type="checkbox"/>

Drain System

✓ = **PROCESS COMPLETED**

Task	Part	Qty	Comments	<input type="checkbox"/>
A: Replace fill floats.	00-122674	6	STD	<input type="checkbox"/>
		2	STD & HTS Add. Wash Sec.	<input type="checkbox"/>

UPPER FLOAT SWITCH

LOWER FLOAT SWITCH

Position Magnets outward

Drain System

✓ = PROCESS COMPLETED

Task	Part	Qty	Comments	<input type="checkbox"/>
A: Replace Roller Conveyor Kit (Contains Roller Conveyors & Retaining Rings)	00-913102-00289	2	20 Of Each Part	<input type="checkbox"/>

Curtains

✓ = PROCESS COMPLETED

Task	Part	Qty	Comments	<input type="checkbox"/>
A: Replace 4 Ply FT Curtain	00-948729	4	N/A: On Add. Wash Sec.	<input type="checkbox"/>
B: Replace 3 Ply FT Curtain	00-948730	6	---	<input type="checkbox"/>
		2	STD Add. Wash Sec.	<input type="checkbox"/>

