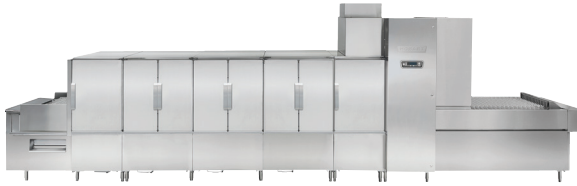




Project _____
AIA # _____ SIS # _____
Item # _____ Quantity _____ C.S.I. Section 114000



FT1000e advansys STEAM Flight-Type Dishwashing Machine



Advansys model shown



Complies with EPA Reduction of Lead in Drinking Water Act 2014

Meets requirements of ASSE Standard No. 1004

SPECIFIER STATEMENT

The specified machine shall be a Hobart Ventless flight type dish machine, 58 gallons of final rinse consumption per hour, with dual rinse, hinged & insulated doors, 30" wide conveyor belt, sliding wash arms without caps, & microprocessor controls with ventless technology, auto clean, auto delime, energy recovery, automatic soil removal system (ASR), and blower dryer.

STANDARD FEATURES

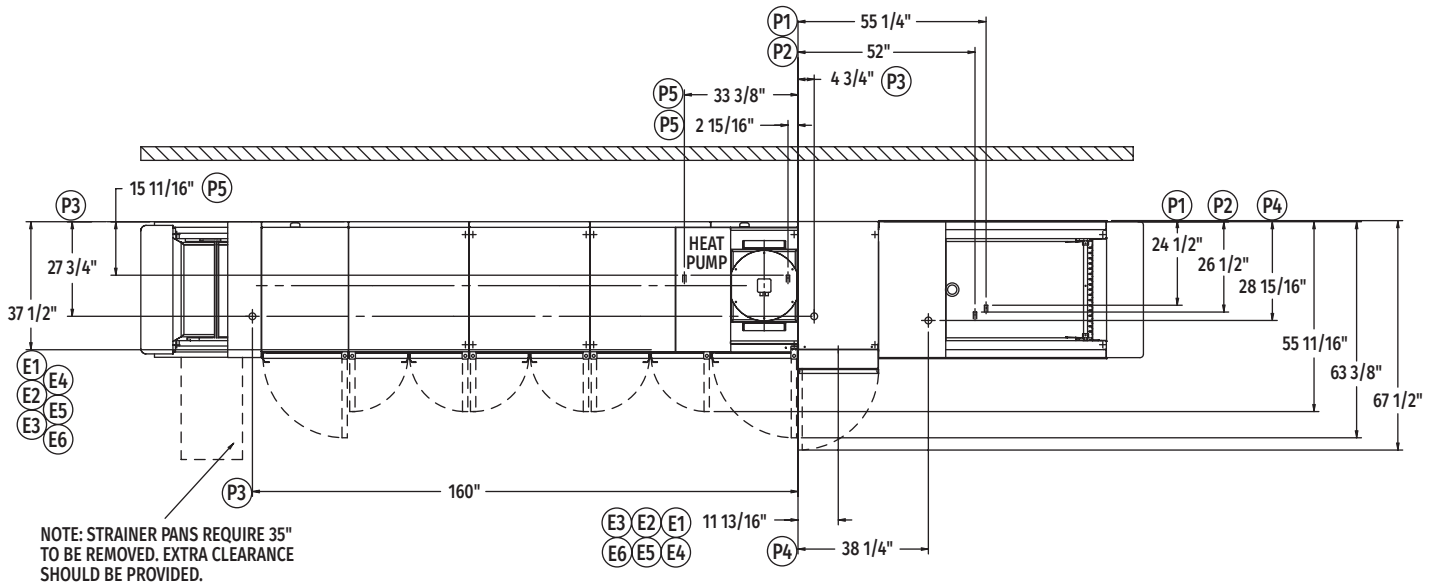
- + Pumped rinse system (pressure gauge not required)
- + Water usage 58 gph
- + Digital controls with machine diagnostics
- + Low temperature alert
- + Hinged insulated cabinet-style doors
- + 31" access on prewash, power wash and power rinse chambers; 20" access on dual rinse and ASR chambers
- + Start and stop switches at both ends
- + Doors open indicator
- + Drains open indicator
- + Door interlocks
- + 3½ H.P. prewash, power wash, and power rinse pump motors, all TEFC
- + Capless auto clean wash arms
- + Easy to remove stainless steel scrap pans and baskets
- + 30" wide conveyor belt
- + Dual rinse
- + Automatic soil removal system (ASR)
- + Auto clean
- + Auto delime
- + Ventless technology
- + Energy recovery
- + Front and rear panels
- + Variable speed conveyor
- + Electric booster heater
- + Configurable drain to load or unload
- + Blower dryer

OPTIONS & ACCESSORIES (Available at extra cost)

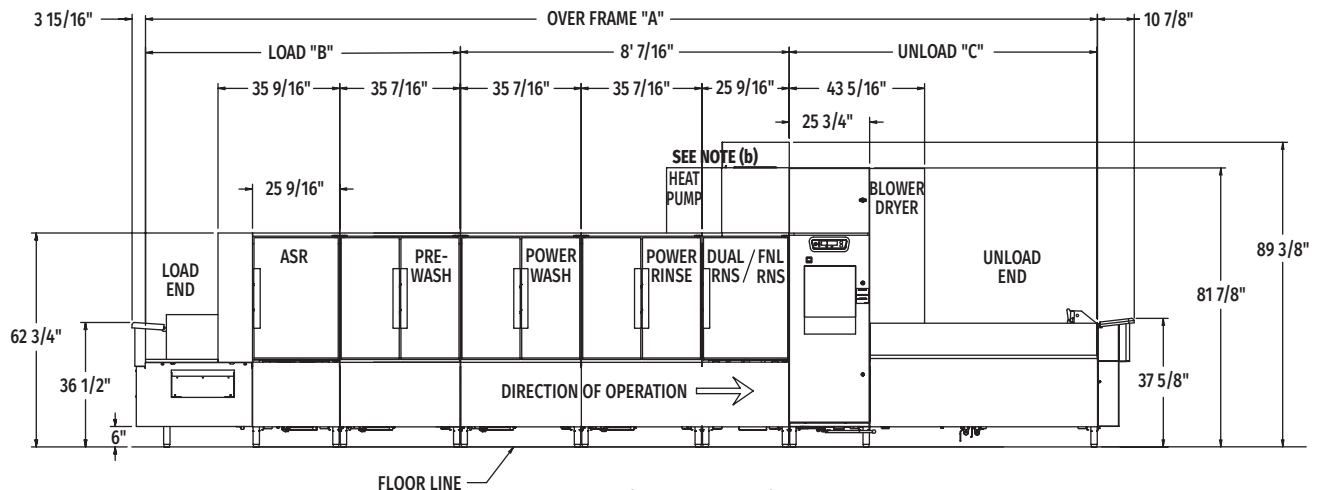
- ☐ Insulated split, vertical slide-up doors
- ☐ Multiple conveyor choices
- ☐ Factory mounted circuit breakers
- ☐ Correctional packages available – contact Hobart for more information
- ☐ Flanged feet
- ☐ Water hammer arrestor/PRV (installed by others)
- ☐ Drain water tempering kit (installed by others)
- ☐ WS-80 water softener (*recommended*)

FT SERIES – FT1000e advansys STEAM

Approved by _____ Date _____ Approved by _____ Date _____



Top View Left to Right

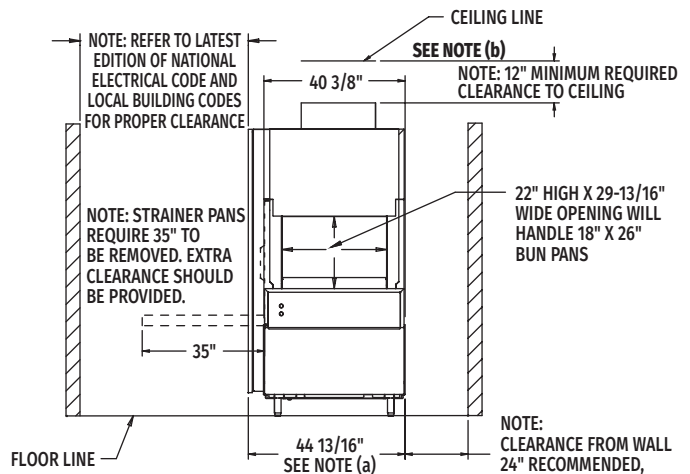


Front View Left to Right

Note: Control box electrical connections – see page 5.

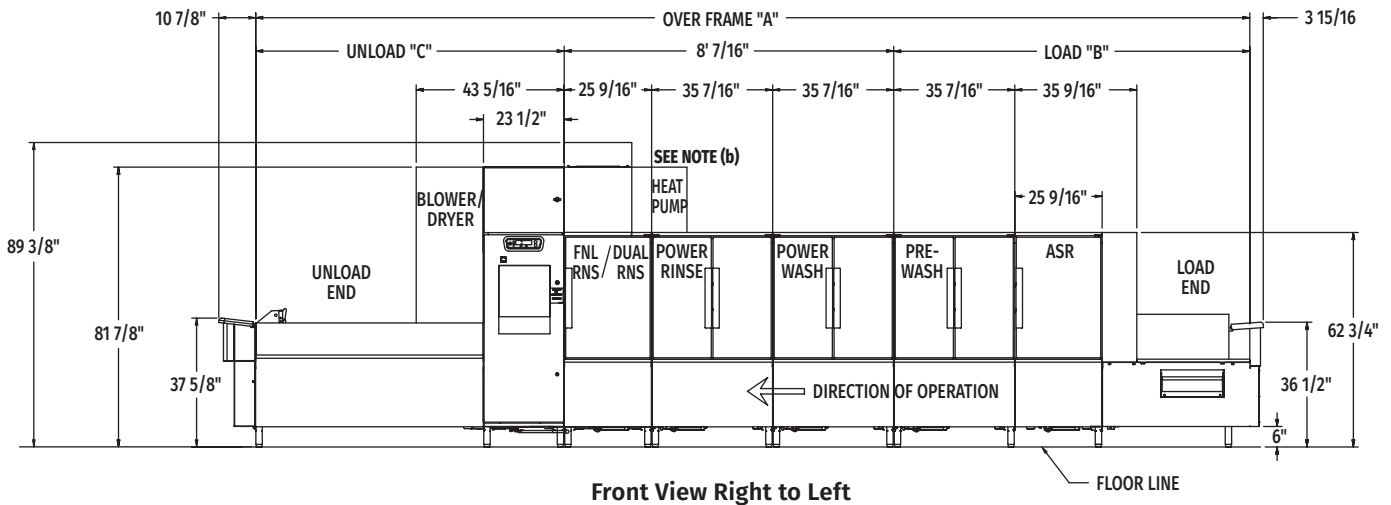
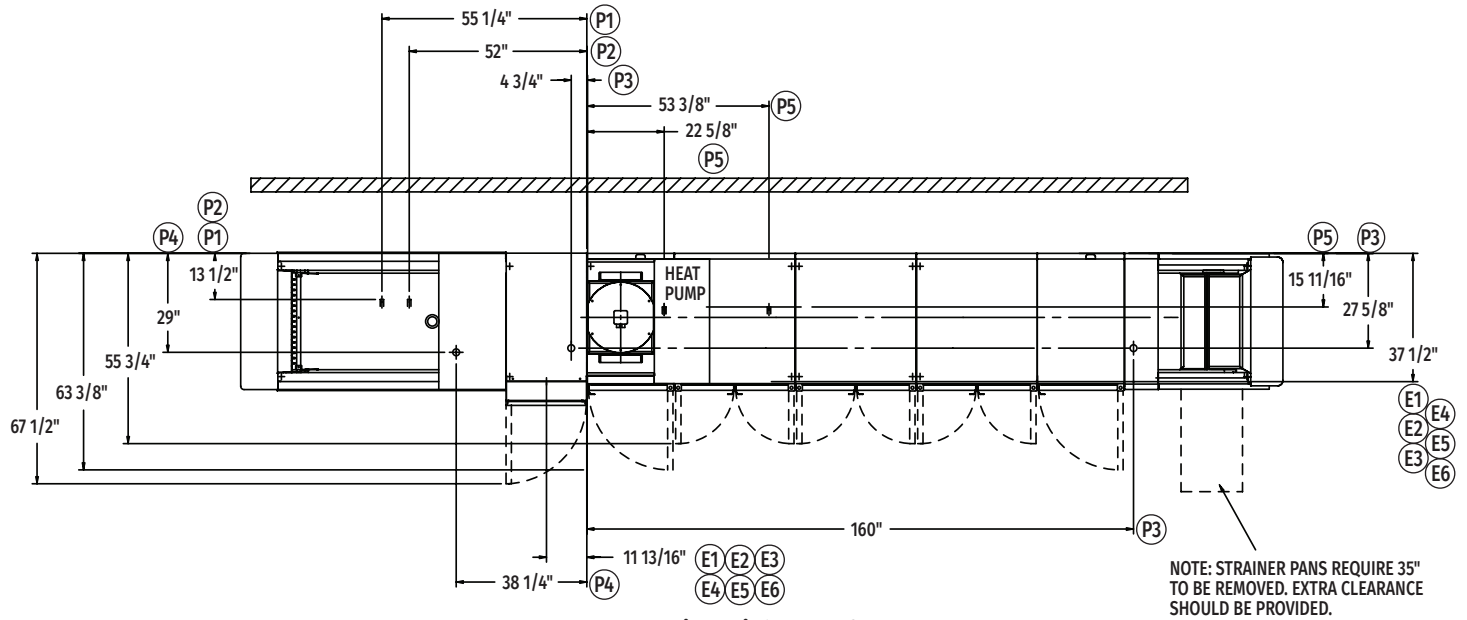
MODEL NO.	"A"	"B"	"C"
FT1023e (7.5'-8'-7.5')	23' 3-1/2"	7' 8-1/2"	7' 6-1/2"
FT1024e (8.5'-8'-7.5')	24' 3-1/4"	8' 8-1/4"	7' 6-1/2"
FT1025e (9.5'-8'-7.5')	25' 3-3/32"	9' 8-3/32"	7' 6-1/2"
FT1025e (7.5'-8'-9')	24' 11-1/4"	7' 8-1/2"	9' 2-1/4"
FT1026e (8.5'-8'-9')	25' 11"	8' 8-1/4"	9' 2-1/4"
FT1027e (9.5'-8'-9')	26' 10-27/32"	9' 8-3/32"	9' 2-1/4"
FT1027e (7.5'-8'-11')	26' 10-7/8"	7' 8-1/2"	11' 1-7/8"
FT1028e (8.5'-8'-11')	27' 10-5/8"	8' 8-1/4"	11' 1-7/8"
FT1029e (9.5'-8'-11')	28' 10-15/32"	9' 8-3/32"	11' 1-7/8"
FT1030e (7.5'-8'-15')	30' 6-3/16"	7' 8-1/2"	14' 9-3/16"
FT1031e (8.5'-8'-15')	31' 5-15/16"	8' 8-1/4"	14' 9-3/16"
FT1032e (9.5'-8'-15')	32' 5-25/32"	9' 8-3/32"	14' 9-3/16"
FT1032e (7.5'-8'-17')	32' 5-3/4"	7' 8-1/2"	16' 8-3/4"
FT1033e (8.5'-8'-17')	33' 5-1/2"	8' 8-1/4"	16' 8-3/4"
FT1034e (9.5'-8'-17')	34' 5-11/32"	9' 8-3/32"	16' 8-3/4"

Note: Overall length of machine is Dimension "A" + 14-13/16"



Back/Unload End

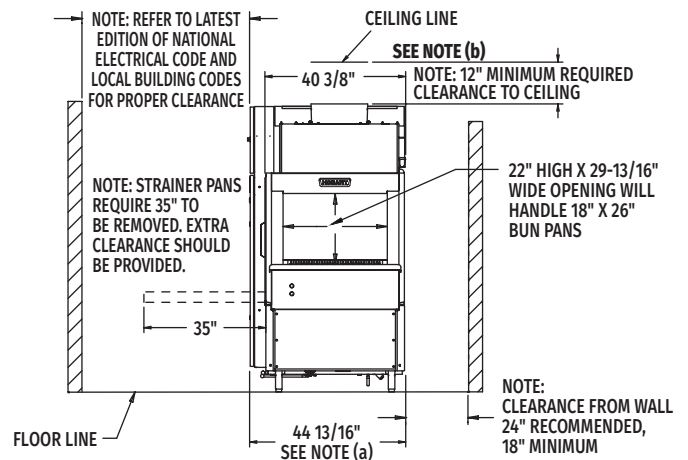
MODEL:
FT1000e ADVANSYS
STEAM
L-R OPERATION
00-562367
REV B



Note: Control box electrical connections – see page 5.

MODEL NO.	"A"	"B"	"C"
FT1023e (7.5'-8'-7.5')	23' 3-1/2"	7' 8-1/2"	7' 6-1/2"
FT1024e (8.5'-8'-7.5')	24' 3-1/4"	8' 8-1/4"	7' 6-1/2"
FT1025e (9.5'-8'-7.5')	25' 3-3/32"	9' 8-3/32"	7' 6-1/2"
FT1025e (7.5'-8'-9')	24' 11-1/4"	7' 8-1/2"	9' 2-1/4"
FT1026e (8.5'-8'-9')	25' 11"	8' 8-1/4"	9' 2-1/4"
FT1027e (9.5'-8'-9')	26' 10-27/32"	9' 8-3/32"	9' 2-1/4"
FT1027e (7.5'-8'-11')	26' 10-7/8"	7' 8-1/2"	11' 1-7/8"
FT1028e (8.5'-8'-11')	27' 10-5/8"	8' 8-1/4"	11' 1-7/8"
FT1029e (9.5'-8'-11')	28' 10-15/32"	9' 8-3/32"	11' 1-7/8"
FT1030e (7.5'-8'-15')	30' 6-3/16"	7' 8-1/2"	14' 9-3/16"
FT1031e (8.5'-8'-15')	31' 5-15/16"	8' 8-1/4"	14' 9-3/16"
FT1032e (9.5'-8'-15')	32' 5-25/32"	9' 8-3/32"	14' 9-3/16"
FT1032e (7.5'-8'-17')	32' 5-3/4"	7' 8-1/2"	16' 8-3/4"
FT1033e (8.5'-8'-17')	33' 5-1/2"	8' 8-1/4"	16' 8-3/4"
FT1034e (9.5'-8'-17')	34' 5-11/32"	9' 8-3/32"	16' 8-3/4"

Note: Overall length of machine is Dimension "A" + 14'-13/16"



Back/Unload End

MODEL:
FT1000e ADVANSYS
STEAM
R-L OPERATION
00-562366
REV B



LEGEND

Electrical Connections	
E1	Electric connection for 1TB with or without circuit breakers. 79-1/8" AFF.
E2	Electric connection for 2TB without circuit breakers. 79-1/8" AFF.
E3	Electric connection for 3TB without circuit breakers. 79-1/8" AFF.
E4	Electric connection for 4TB without circuit breakers. 79-1/8" AFF.
E5	Electric connection for 5TB without circuit breakers. 79-1/8" AFF.
E6	Electric connection for 2TB with circuit breakers. 79-1/8" AFF.
Plumbing Connections	
P1	Common hot water connection (automatic fill) 110°F water minimum, 1" FPT, 5-1/2" AFF.
P2	Common cold water connection, 55°F minimum, 1" FPT, 5-1/2" AFF.
P3	Drain connection: Default location is drain to unload. May be drained to load end with field installed kit. 2" FPT, 7" AFF.
P4	Common steam connection (tank heat). 1-1/2" FPT, 7" AFF (12-45 PSI flowing pressure).
P5	Condensate return, gravity connection (tank heat), bucket type traps furnished, 2 connections. 3/4" FPT, 11" AFF.

SERVICE CONNECTION WITH CIRCUIT BREAKERS (2) SERVICE CONNECTIONS AS SHOWN BELOW

E1	Motors, Controls & Blower Dryer Motor (1TB) (1) Service Connection as Shown Below		
Voltage	Rated Amps	Minimum Supply Circuit Ampacity	Maximum Protective Device
208/60/3	41.8	60	60
240/60/3	41.8	60	60
480/60/3	25.4	35	35
600/60/3	19.8	25	25
E6	Heat Pump Compressor & Wash Tank Auxiliary Heat, 13.1 KW & Electric Booster (10.7 KW) (2TB) (1) Service Connection as Shown Below		
Voltage	Rated Amps	Minimum Supply Circuit Ampacity	Maximum Protective Device
208/60/3	92.6	125	125
240/60/3	83.8	125	125
480/60/3	41.7	60	60
600/60/3	32.9	45	45

Note: 480V single point common connection available, consult factory for details.

WARNING: Plumbing and electrical connections should be made by qualified personnel who will observe all the applicable plumbing, sanitary, safety codes and National Electrical Code.

General Notes:

- (a) The control box is attached to the center section and is rotated 90 degrees for shipping.

AFF = Above Finished Floor

All dimensions taken from the floor line may increase 3-1/4" with leg adjustment.

For convenience when cleaning, customer should install water tap near machine with 30 ft. of heavy duty hose with squeeze valve.

This drawing is supplied as a reference for connection information only. It will not be utilized for manufacturing of unit.

Electrical Notes:

Service wire temperature rating: 90°C minimum.

Detergent and rinse aid feeder service connections standard on all FT1000e models at machine line voltage.

Dishmachine not provided with internal GFCI protection.

Plumbing Notes:

Recommended building flowing hot water pressure to the dishwasher is 40-45 PSI.

Recommended building flowing cold water to the dishwasher is 30-35 PSI. If cold water is less than 55°F, contact sales engineering.

Water hammer arrestor (meeting ASSE-1010 standard or equivalent) to be supplied (by others) in hot and cold supply lines at service connection.

If steam pressure is less than 12 psi flowing pressure at the dishwasher, contact sales engineering.

Ventilation Notes:

Heat pump and enclosure ships on separate skid to yield 81-7/8" door clearance.

Room ventilation is required to handle machine's latent & sensible heat.

- (b) No facility ventilation within 24" of heat pump enclosure.

Advansys Notes:

Refer to Advansys technical report at www.hobartcorp.com or contact sales engineering for guidance with local regulatory compliance.

Water Quality Required:

Total water hardness < 3 grains per gallon.

Total suspended solids (TSS) < 10 microns.

Water softener recommended on P2 cold water connection.

Heat Gain to Space (BTU/Hr.)	
Latent	Sensible
100,400	43,000



FT1000e advansys STEAM

Flight-Type Dishwashing Machine

(Right to Left)

SERVICE CONNECTIONS WITH CIRCUIT BREAKERS (SINGLE POINT ELECTRICAL CONNECTION)

E1 Motors, Controls, BD Motor, Heat Pump (1TB) Wash & Booster Heat			
Voltage	Rated Amps	Minimum Supply Circuit Ampacity	Maximum Protective Device
480/60/3	67.1	90	90
600/60/3	52.7	70	70

SERVICE CONNECTIONS W/O CIRCUIT BREAKERS (3) SERVICE CONNECTIONS AS SHOWN BELOW

E1 Motors & Controls, Blower Dryer Motor (1TB) (1) Service Connection as Shown Below			
Voltage	Rated Amps	Minimum Supply Circuit Ampacity	Maximum Protective Device
208/60/3	41.8	60	60
240/60/3	41.8	60	60
480/60/3	25.4	35	35
600/60/3	19.8	25	25
E3 Heat Pump Compressor & Wash Tank Auxiliary Heat (3TB) (1) 13.1 kW Connection as Shown Below			
Voltage	Rated Amps	Minimum Supply Circuit Ampacity	Maximum Protective Device
208/60/3	62.9	80	80
240/60/3	58.0	80	80
480/60/3	28.9	40	40
600/60/3	22.6	30	30
E5 Electric Booster (5TB) (1) 10.7 kW Connection as Shown Below			
Voltage	Rated Amps	Minimum Supply Circuit Ampacity	Maximum Protective Device
208/60/3	29.7	40	40
240/60/3	25.7	35	35
480/60/3	12.9	20	20
600/60/3	10.3	15	15

SPECIFICATIONS

Capacities

Conveyor Speed (feet per minute)	4.0 - 8.5
Dishes per Hour	14,316
ASR Tank (U.S. gallons)	7.2
Pre-Wash Tank (U.S. gallons)	40
Wash Tank (U.S. gallons)	40
Rinse Tank (U.S. gallons)	40
Dual Rinse Tank (U.S. gallons)	7.2

Motor Horsepower

Auto Soil Removal	¾
ASR Wash	¾
Pre-Wash Tank	3½
Wash Tank	3½
Rinse Tank	3½
Dual Rinse Tank	¾
Final Rinse	½
Conveyor	¾
Blower Dryer	2
Heat Pump Compressor	6

Water Consumption

U.S. Gallons per Hour (maximum use)	58
U.S. Gallons per Minute	0.97

Steam Consumption – Tank Heat

Pounds per Hour (maximum)	138
Regulated – based on 12 to 45 PSI steam at the machine. (160°F rinse minimum – 160°F dual rinse minimum)	

Electric Tank and Booster Heat

Electric Tank Heat (KW)	13
Electric Booster (KW)	10.7

Shipping Weight (approximate). . . . Varies by individual model
(Consult your Hobart representative)

Crated Dimensions Varies by individual model
(Consult your Hobart representative)

FT1000 Advansys Water Treatment System	
Model	Description
WS-80	Water Softener
Available through Hobart Service only	
PF-10-EHT	Hi-Temp Filter Housing
SD-510HT	Sediment Filter Cartridge

CONTROL BOX ELECTRICAL CONNECTIONS

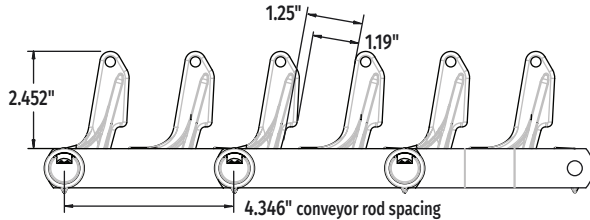


*Note for installing electrician: Repunch holes E1 and E6 as required to coincide with conduit requirements for machines with circuit breakers.

Detail “A-A”
(not to scale)

CONVEYOR TYPE OPTIONS

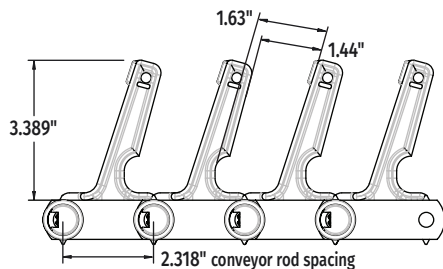
All conveyors provided with standard polypropylene material. Optional stainless steel conveyors available by request.
Please contact your sales representative for stainless steel conveyor options.



STANDARD

Standard Conveyor designed for General Ware including tableware (Plates/Bowls), most serving trays (lip height less than 1 1/4") as well as prep-ware (Hotel & Sheet Pans).

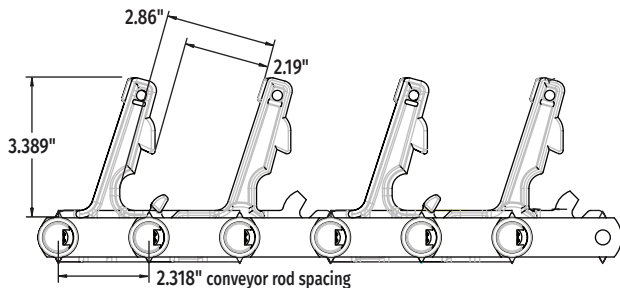
- Optional cross-rods every 4th row available for additional support of heavier ware (oversized ware/mixing bowls) as well as to promote warewashing drainage at optimal angle (hotel pans).



TYPE A

Optional Conveyor designed exclusively with our Healthcare segments in mind. In addition to accommodating General Ware, the Type A conveyor has a tighter conveyor rod spacing which provides increased conveyor density for added strength, as well as additional finger height and spacing to support most insulated dome bases and lids.

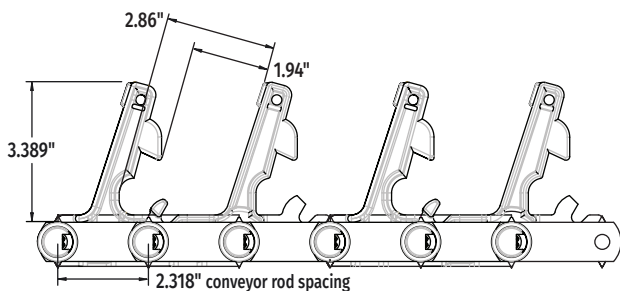
- Optional cross-rods every 4th row available for additional support of heavier ware (oversized ware/mixing bowls) as well as to promote warewashing drainage at optimal angle (hotel pans).



POSITION 1

Optional Conveyor designed for customers using insulated compartmentalized trays, as well as thicker insulated dome bases and lids. In addition to accommodating General Ware, the Position 1 conveyor provides even greater spacing between fingers, as well as a pronounced 3/8" "nose" to secure compartmentalized trays in place.

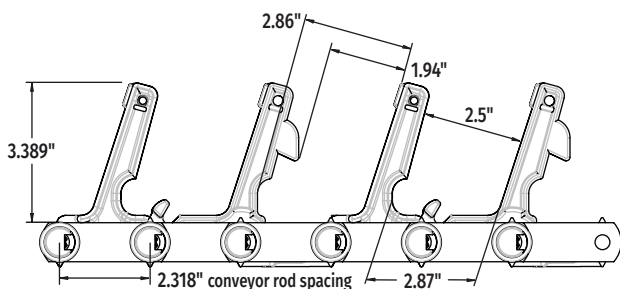
- Optional cross-rods every 4th row available for additional support of heavier ware (oversized ware/mixing bowls) as well as to promote warewashing drainage at optimal angle (hotel pans). Cross-rods can also be used to create stable support for some compartmentalized trays to orient upright through dishmachine.



POSITION 2

Optional Conveyor designed for customers using insulated compartmentalized trays, as well as thicker insulated dome bases and lids. In addition to accommodating General Ware, the Position 2 conveyor provides additional spacing between fingers, as well as a pronounced 5/8" "nose" to secure compartment trays in place.

- Optional cross-rods every 4th row available for additional support of heavier ware (oversized ware/mixing bowls) as well as to promote warewashing drainage at optimal angle (hotel pans). Cross-rods also create stable support for compartmentalized trays to orient upright through dishmachine.



TIVOLI

Optional Conveyor designed exclusively with our Correctional segments in mind. In addition to accommodating General Ware, the Tivoli conveyor provides our widest spacing between fingers as well as a 3/8" "nose" to support the largest insulated compartmentalized trays, commonly used in correctional settings. The Tivoli conveyor comes standard with cross-rods every 3rd row for additional support of heavier ware (oversized ware/mixing bowls) as well as to promote warewashing drainage at optimal angle (hotel pans). Cross-rods also create stable support for compartmentalized trays to orient upright through dishmachine.

As continued product improvement is a policy of Hobart, specifications are subject to change without notice.