

**Machines Covered**

This Covers the FT900 line of dishwashers including: FT900 STD Base Model, FT900 STD Additional Wash Sections, FT900 HTS Base Model, and FT900 HTS Additional Wash Sections.

The below information was taken from and can be found within the instruction manual of any Hobart product, located at: <https://www.hobartcorp.com/resources-hobart>.



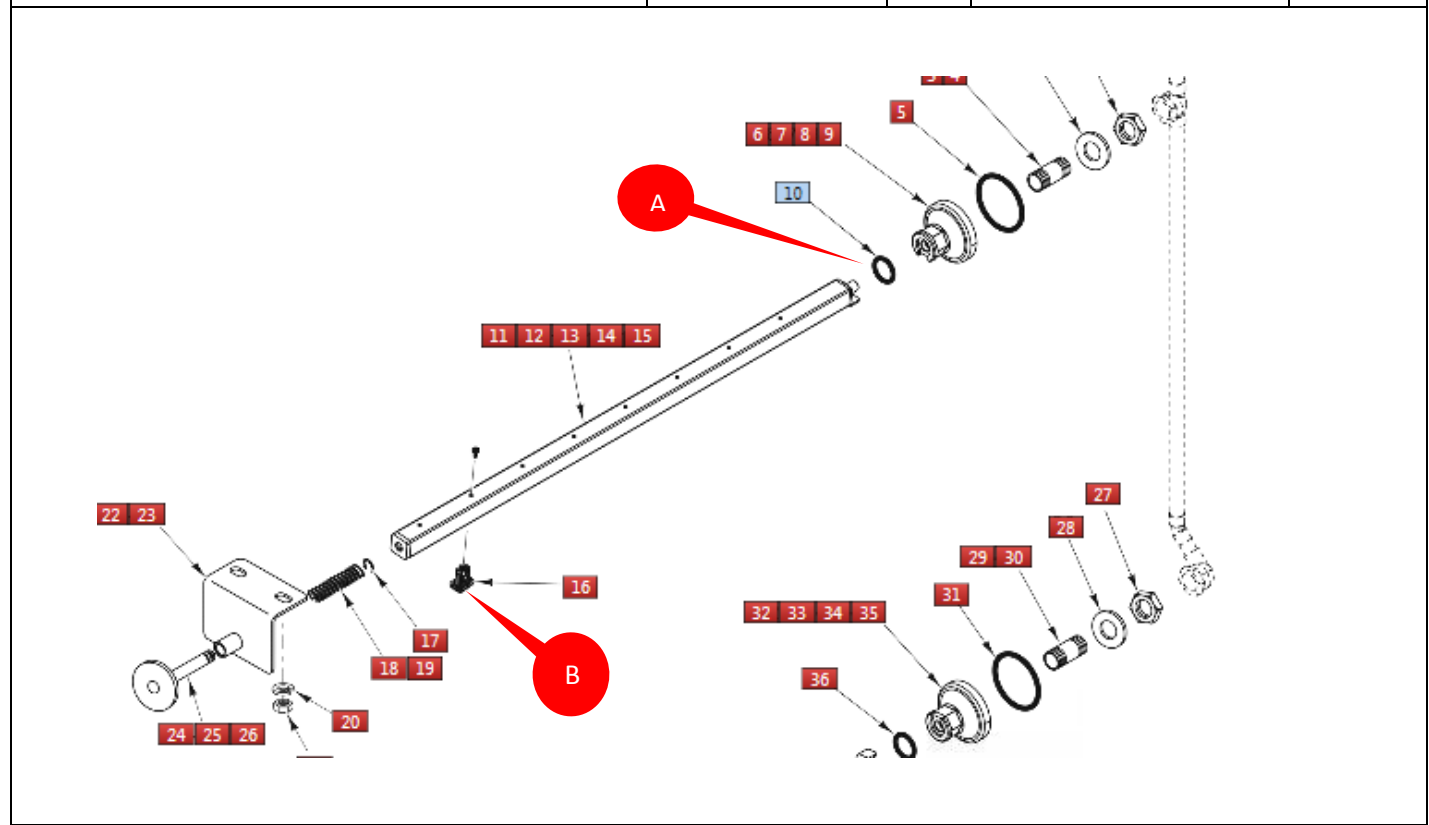
**⚠️WARNING** Disconnect the electrical power to the machine and follow lockout / tagout procedures. There may be multiple circuits. Be sure all circuits are disconnected.

**⚠️WARNING** When performing service work, corrosive chemicals may be present. Exposure to these chemicals could result in injury. It is very important to follow the manufacturer's instructions as found in the (Material) Safety Data Sheet/(M) SDS. Information regarding the Personal Protective Equipment (PPE) requirements can be found in the (M) SDS that accompanies product or can be found online.

**Wash Tank/Rinse Tank System**

✓ = PROCESS COMPLETED

Task	Part	Qty	Comments	<input type="checkbox"/>
A: Replace O-Ring.	00-067500-00130	6	STD & HTS	<input type="checkbox"/>
		2	STD & HTS Add. Wash Sec.	<input type="checkbox"/>
B: Replace Nozzle Assy.	00-893535	16	N/A: On Add. Wash Sec.	<input type="checkbox"/>



**Fill/Rinse System**

✓ = **PROCESS COMPLETED**

Task	Part	Qty	Comments	<input type="checkbox"/>
A: Replace vacuum breaker kit.	00-292910	3	N/A: On Add. Wash Sec.	<input type="checkbox"/>

**Drain System**

✓ = **PROCESS COMPLETED**

Task	Part	Qty	Comments	<input type="checkbox"/>
A: Replace fill floats.	00-122674	6	STD & HTS	<input type="checkbox"/>
		2	STD & HTS Add. Wash Sec.	<input type="checkbox"/>

**Drain System**

✓ = PROCESS COMPLETED

Task	Part	Qty	Comments	<input type="checkbox"/>
A: Replace Roller Conveyor Kit (Contains Roller Conveyors & Retaining Rings)	00-913102-00299	1	25 Of Each Part	<input type="checkbox"/>

**Curtains**

✓ = PROCESS COMPLETED

Task	Part	Qty	Comments	<input type="checkbox"/>
A: Replace Splash Short Curtain	00-120160-00001	4	STD & HTS	<input type="checkbox"/>
		1	STD & HTS Add. Wash Sec.	<input type="checkbox"/>
B: Replace Splash Standard Height Curtain	00-892567-00001	8	---	<input type="checkbox"/>
		2	STD Add. Wash Sec.	<input type="checkbox"/>
C: Replace Splash 6" HTS Curtain	00-892567-00002	8	---	<input type="checkbox"/>
		2	HTS Add. Wash Sec.	<input type="checkbox"/>

