



Project \_\_\_\_\_  
 AIA # \_\_\_\_\_ SIS # \_\_\_\_\_  
 Item # \_\_\_\_\_ Quantity \_\_\_\_\_ C.S.I. Section 114000



## NGW2P Automatic Wrapping System with Dual Label Printers



### SPECIFIER STATEMENT

The Hobart NGW2P has all the same features and functionality of the NGW automatic wrapper, with the addition of a secondary label printer. A secondary printer allows for an additional label (printed or pre-printed) to be applied to the package. The printer has the flexibility to place the label in multiple positions and orientations on the package.

The NGW2P uses an advanced sensor system and camera technology to size and weigh the package, optimizing film usage. The NGW2P automatically stretches film around all 4 sides, seals the package, computes price and applies two labels.

### MODELS

- NGW1-LS2LR2P One roll, left to right
- NGW1-LS2RL2P One roll, right to left
- NGW2-LS2LR2P Two rolls, left to right
- NGW2-LS2RL2P Two rolls, right to left

### STANDARD FEATURES

- + Secondary printer for dual labeling capability
- + Printers automatically adjust position based on the PLU label types
- + Hose down capability using covers for printers and display
- + Large 15.6" touchscreen, IP66 rated for lasting performance
- + Fully automatic – operator places package into the NGW, weighing, wrapping and labeling is all done automatically
- + Can support and has the memory for up to 999,999 1-6 digit PLU codes
- + Auto off/on timer for heated sealer belt
- + Emergency safety stop switch on front of unit
- + System automatically shuts down when not in use
- + Swivel wand allows for label placement on all four corners of the meat package
- + Intuitive operator diagnostics to reduce service calls
- + COOL (country of origin labeling) can be created and modified on NGW
- + USDA (United States Department of Agriculture) mandated safe handling statements available in standard and custom label formats
- + Label can provide ingredients, graphics, special messages, and nutrifacts information
- + UPC, EAN 13, EAN 128 Barcodes and GS1 DataBar
- + Access the NGW remotely
- + NGW can communicate to other HT Series devices and scale management software

### ACCESSORIES (Available at extra cost)

- NGWKIT-SHELF – Fixed stainless side shelf
- RBG-2 – Rotary bin with casters
- HRT5-3 – Roller discharge table
- GRVCON-1 – 4 ft. discharge roller conveyor

NGW2P AUTOMATIC WRAPPING SYSTEM WITH DUAL LABEL PRINTERS

Approved by \_\_\_\_\_ Date \_\_\_\_\_ Approved by \_\_\_\_\_ Date \_\_\_\_\_



# NGW2P

## Automatic Wrapping System with Dual Label Printers

### INCLUDED WITH PURCHASE

- + (2) EPP – Access Prepack Printers
- + 15.6" ColorTFT LCD Touch Screen, IP66 rated

### TECHNICAL SPECIFICATIONS

- + 1 GB DDR3 RAM
- + 8 GB storage media
- + 1.0 GHz dual-core processor
- + 8 dot/mm (640 dots) high resolution thermal print head
- + 802.3 wired communication at 10/100/1000 Mbps Ethernet and 802.11 a/b/g/n/ac for wireless networks

### SPECIFICATIONS

#### WEIGHING

**Capacity:** 30 lbs. (Manual) 20 lbs. (Automatic mode)  
**Weighing Increments:** Dual range capable, 30 x 0.01 lb., 12 x 0.005 lb./15 x 0.005 kg, 6 x .002 kg  
**Minimum Weight to Print:** .20 lb.


#### LABELING

**Label Width:** 1.5", 2.25" and 3.0"  
**Label Length:** 1.5" up to 4.0" in .5" inch increments  
**Dual Labeling Capacity:** Secondary printer will print and apply or apply a pre-printed label.

#### WRAPPING

**Package Size Width:** 4.5" min, 15.0" max  
**Length:** 4.5" min, 10.1" max  
**Height:** .4" min, 6.0" max

### SOFTWARE

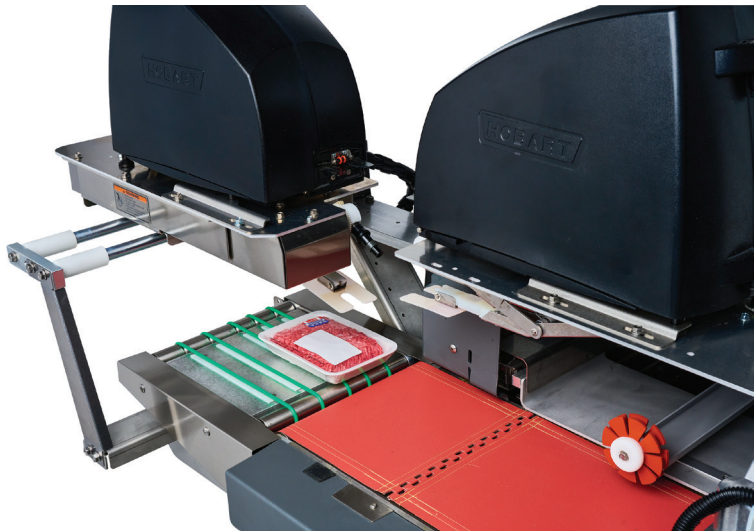
- + Linux embedded operating system 
- + When needed, the OS system is capable of being upgraded to support new features and any security patches
- + Interfaces with scale management software such as:
  - Invafresh
  - ADC's Interscale
  - Hobart HCT Software
  - Hobart HTe Software
    - Content management
    - Label editing
    - Remote updates

**Wrapping Speed:** Maximum of 30 packages per minute  
**Type of Film Used:** PVC  
**Film Thickness:** 60 gauge min, 100 gauge max  
**Film Core Size:** 3" I.D.  
**Film Maximum Diameter:** 9.5" O.D.  
**Film Widths:** 15" min, 20" max

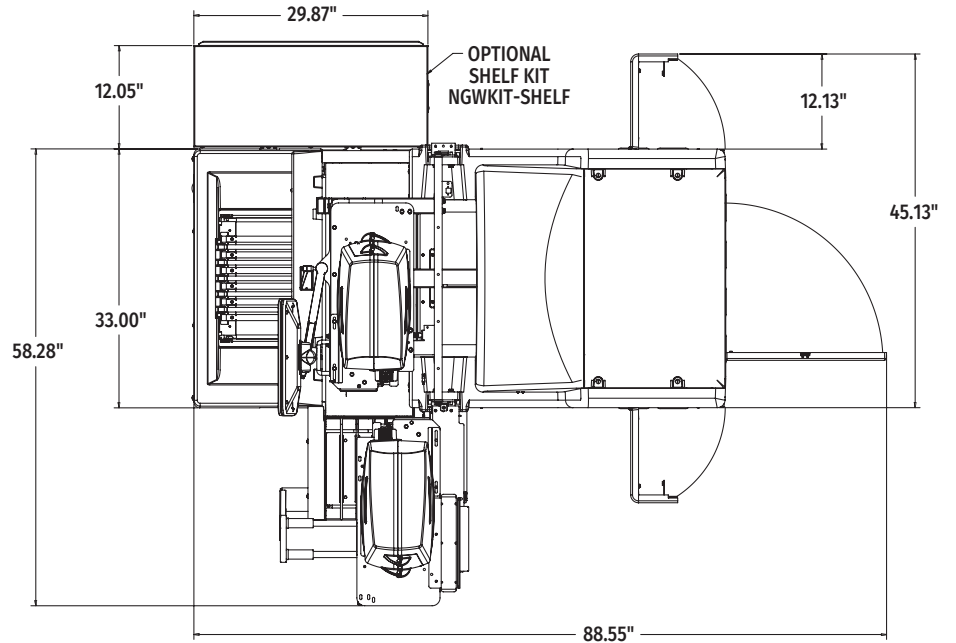
**Pricing Capacity:** Up to 999.99 in steps of .01

**Electrical:** 220 volts (4 wire-2 hot lines, neutral & ground), 60 hertz, 1 phase, 20 amps. For power under 208 volts, field upgradeable installation of optional voltage Buck/Boost transformer recommended

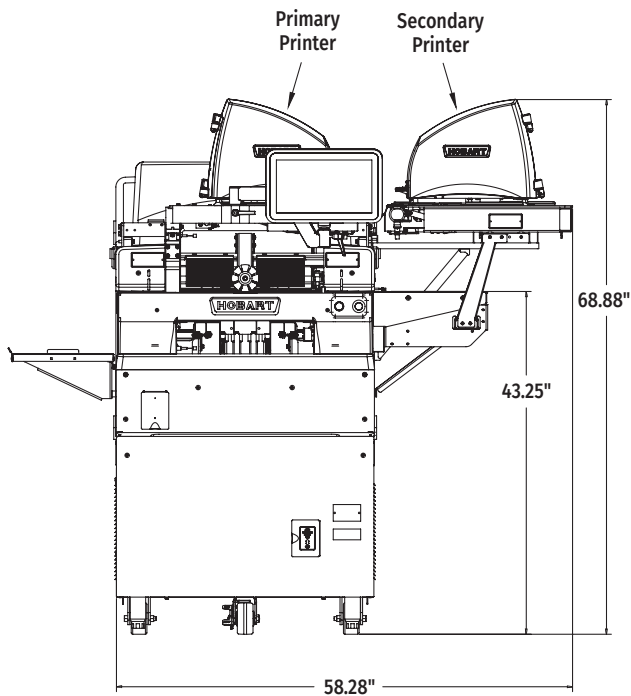
**Shipping Weight:** Approximately 1,450 lbs.



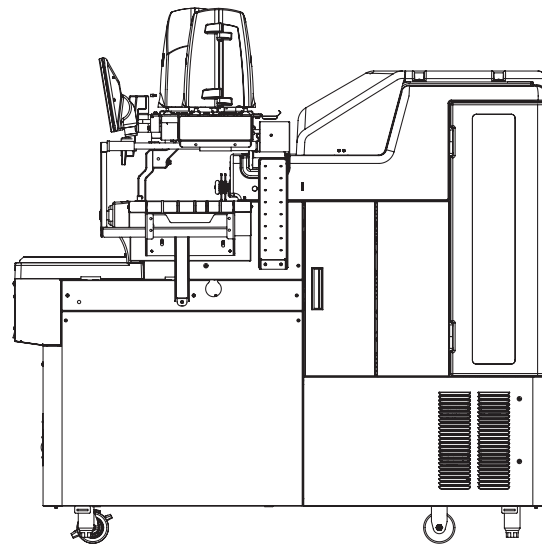
### DETAILS AND DIMENSIONS



Left to Right Operation – Top View



Left to Right Operation – Front View



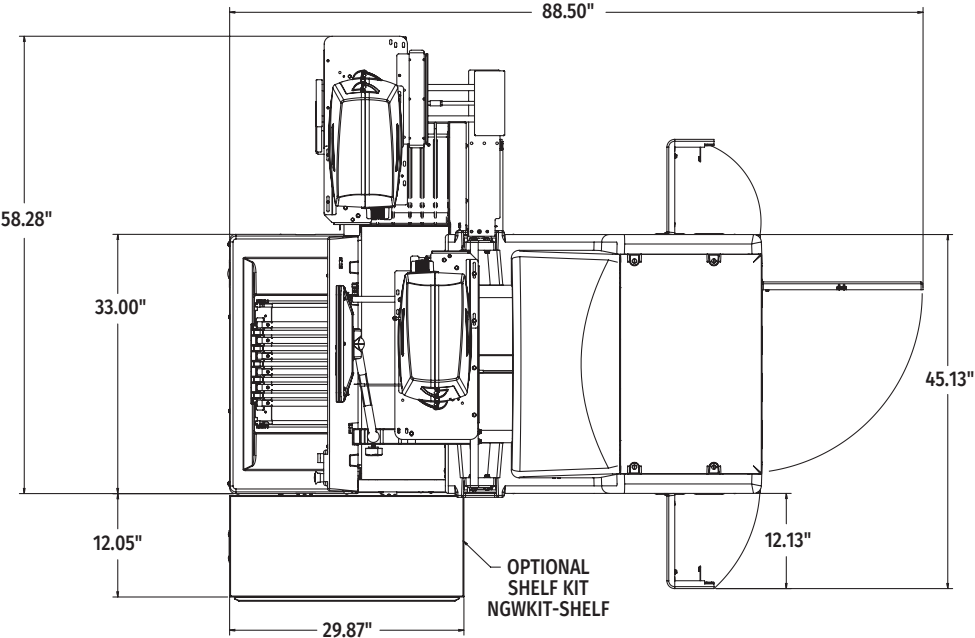
Left to Right Operation – Side View



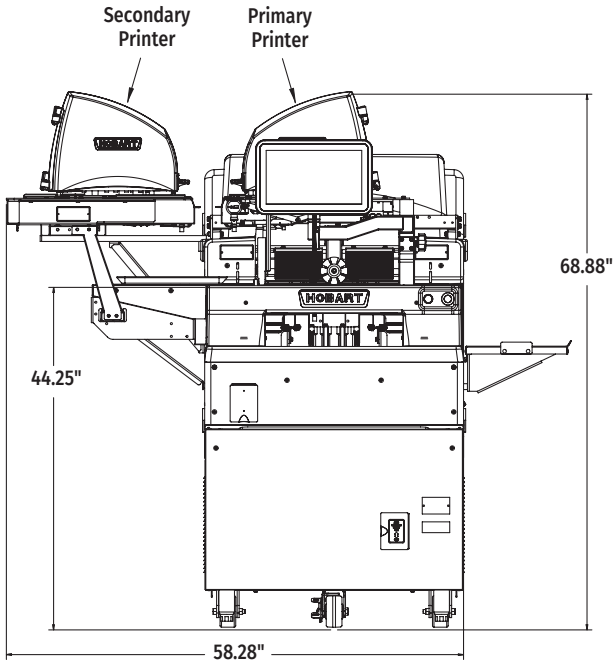
# NGW2P

Automatic Wrapping System  
with Dual Label Printers

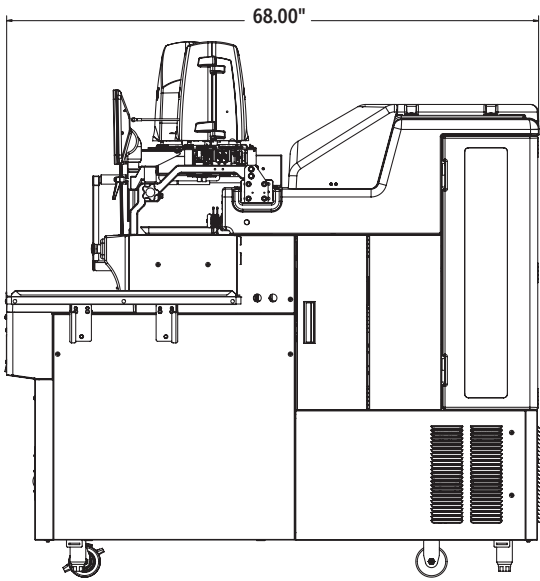
## DETAILS AND DIMENSIONS



Right to Left Operation – Top View



Right to Left Operation – Front View



Right to Left Operation – Side View

As continued product improvement is a policy of Hobart, specifications are subject to change without notice.